

## Research Article

# Modeling the trajectories of growth and reproduction in European Hake (*Merluccius merluccius*, L. 1758) from the Sea of Marmara, Turkey

Yildiz T.<sup>1</sup>; Kesiktaş M.<sup>2\*</sup>; Yemişken E.<sup>3</sup>; Sönmez B.<sup>4</sup>; Eryilmaz L.<sup>3</sup>

Received: May 2021

Accepted: October 2021

### Abstract

The study evaluated to model the growth and reproduction aspects of the hake, *Merluccius merluccius*, in the Sea of Marmara. On-board sampling was conducted on the commercial beam trawl fishery from February 2016 to January 2017. For the growth trajectories, using monthly length frequency data set, different methods were employed to improve parameter optimization. The variation of reproductive intensity was modelled using Generalized Additive Models (GAMs). The growth was fast and parameterized as  $L_{\infty}=65.9$  cm,  $K=0.16$  year<sup>-1</sup> according to the Electronic Length Frequency Analysis (ELEFAN) with genetic algorithm optimization approach. Seasonal variation in growth, fitted a seasonally oscillating VBGF (soVBGF), indicated intense seasonality. The onset of the positive phase of the growth oscillation was observed around October proofed by a high fish condition that the growth starts accelerate after the summer period. A high gonadosomatic index (GSI) was evident over most of the year except between May and July, captured also the time component in the GAM modeling. The total length and fish condition have the highest impact on the GSI among the modeling parameters evaluated while temperature has low partial effect. The length at the first sexual maturity for females and males was calculated at 26.5 and 22.0 cm, respectively, lower than that of the Atlantic and Mediterranean waters. It is believed that this study allows deeper and new conclusions for the management of hake stock in the Sea of Marmara and Mediterranean Basin.

**Keywords:** *Merluccius merluccius*, Age, Growth, Spawning, Sea of Marmara

---

1-Faculty of Aquatic Sciences, Istanbul University, Istanbul, Turkey

2-Department of Biology, Hydrobiology Division, Science Institute, Istanbul University, Istanbul, Turkey

3-Department of Biology, Faculty of Science, Istanbul University, Istanbul, Turkey

4-Department of Biology, Institute of Graduate Studies in Sciences, Istanbul University, Istanbul, Turkey

\*Corresponding author's Email: kesiktasmert@gmail.com

## Introduction

The European hake (*Merluccius merluccius*, Linnaeus, 1758) is widely distributed from the Northeast Atlantic shelf to the Mediterranean Sea (Casey and Pereiro, 1995). It is a benthopelagic species, range extends from 30 to 1000 m (Froese and Pauly, 2019). It is generally found in muddy bottom habitat in continental shelf basin. This fish is mostly piscivorous, i.e. feeds mostly on fish, and also eats crustaceans, molluscs etc. (Domínguez-Petit, 2007). It carries out daily vertical feeding migrations, staying close to the bottom in the daytime and rising off the bottom to adopt a midwater habit at night (García-Rodríguez and Esteban, 1995).

The hake represents a basic component of the demersal communities and its high market value ranks it among the most commercially important species in the Mediterranean Sea (Ligas *et al.*, 2011). Due to its socio-economic importance and significant source of protein, various aspects of its bio-ecology (Alegria Hernandez *et al.*, 1982), distribution patterns (Orsi-Relini *et al.*, 2002; Maravelias *et al.*, 2007), growth (e.g. Piñeiro and Sainza, 2003; De Pontual *et al.*, 2006), genetics (Roldán *et al.*, 1998), fisheries and exploitation (Martin *et al.*, 2002) have been studied. However, studies from the Sea of Marmara (from now on simply as SEM) have contributed little to Mediterranean hake research as a basin scale. The first historical information was generated by Beverton and Holt (1959) on the growth parameters of hake in the SEM. As a basic scale, its growth

(Kahraman *et al.*, 2017a; Gül *et al.*, 2019a,b) and reproduction biology (Kahraman *et al.*, 2017b) in the SEM has just been a hot spot for the researchers in the recent years.

The European hake is commercially important species for all Turkish waters. Due to this economic importance, the European hake is caught by different fisheries techniques such as beam trawl, nets, and longlines. According to official Turkish Fisheries Statistics, there has been a clear decrease in landings from the SEM in the last 15 years. Unfortunately, the unit stocks of hake in the SEM and Aegean Sea have not been settled yet. Moreover, no stock assessments or quotas have been assigned to hake in Turkish fisheries. The minimum landing size is the only output control objected to hake in the current Turkish legislation. However, data of the reproductive and growth biology of the hake in the SEM is scarce and has, to a wide extent, not been modelled. Advanced biological knowledge is the main tool for sustainable management of the European hake fishery in the SEM. An overview of existing literature on hake also will be helpful when comparing the novel findings of this study and also remark the points where more research is practical in the SEM and adjacent seas.

## Materials and methods

### *Study area*

The Sea of Marmara is a small basin with a surface area of ~11,500 km<sup>2</sup> and a maximum depth of 1390 m. This basin is a unique intercontinental sea located

where the continents of Europe and Asia meet. The hydrography of this small basin is chiefly generated by the Mediterranean and Black Seas (Beşiktepe *et al.*, 1994) creating a unique two-layer marine ecosystem (Sorokin, 1983). The surface layer of the Sea of Marmara above 25 m comprises Black Sea waters of relatively low salinity (‰18), while high-salinity (‰38.5) Mediterranean waters form the deep layer below 25 m (Beşiktepe *et al.*, 1994). For this reason, the benthic assemblages differ between the shallow and deep waters in the Sea of Marmara (Yildiz, 2020).

Fishing by shrimp beam trawling in the SEM started from 1969 (Zengin and Akyol, 2009), but two years later, the bottom trawl fishery was banned in the entire SEM in 1971. After those years, beam trawls have become the principle gears to catch economic demersal species such as shrimps and European hake (Deniz *et al.*, 2020). In addition, European hake stocks have been caught by gillnets once in a year between March and the end of May in depths of 50-70 m (Göktürk *et al.*, 2016). However, in the SEM the highest hake abundances are located at approximately 90 m (Yildiz, 2020). Beam trawlers primarily target the *Parapenaeus longirostris*, which is the most abundant in benthic fauna of the Sea of Marmara, but European hake is mostly captured as a main by-catch species (Yazici, 2004; Zengin *et al.*, 2004; Öztürk, 2009). The main beam trawling fishing area in the SEM is located around Kapıdağ Peninsula in the western part of the SEM (Öztürk, 2009).

The length overall and horse power (HP) of 147 beam trawl vessels engaged in the study period ranged between 7 and 24 m ( $12 \text{ m} \pm 3 \text{ SD}$ ) and 70 and 448 HP ( $178 \text{ m} \pm 92 \text{ SD}$ ), respectively.

#### Sampling

Commercial beam trawlers were used, whose length was 2.5 m and cod end was 44 mm due to the reasons listed above and the limitations of other fishing gears (fishing depth and duration of season). Beam trawl hauls were conducted at a depth of 50-150 m, at a speed of 2.0-2.5 knots. In the closed season (15 April-31 August and 1-31 January), a special fishing permission was approved from the ministry. Monthly biological data were collected from February 2016 to January 2017 in the Şarköy and Hoşköy districts in Tekirdağ locality on the Northwest part of the SEM (coordinates in decimal degrees (DD), 40.6850, 27.2739; 40.5035, 27.2709; 40.5086, 27.7128).

#### Length-weight relationship (LWR)

Total length (TL) and total weight (TW) of 698 specimens were recorded to the nearest 0.1 mm and 0.1 g, respectively. Difference in mean length and weight between sexes was tested with Wilcoxon-test. The Chi-square test was used to compare sex ratios from the expected 1:1 (♂/♀) ratio. The sexes determined by macroscopic examination of the gonads. The LWR was calculated by Le Cren's (1951) equation. Analysis of covariance was performed to test the differences in the LWRs between sexes (Zar, 1999). A test of whether the fish in

a population exhibit isometric growth or not can be calculated by noting that  $b$  is the estimated slope from fitting the transformed length-weight model (Ogle, 2019). Hypothesis tests regarding model parameters can be estimated with a t-test using the below formula:

$$t = (\hat{\beta} - \beta_0) / SE_{\hat{\beta}}$$

Where  $\hat{\beta}$ ,  $SE_{\hat{\beta}}$  and the df are from the linear regression results and  $\beta_0$  is the specified value in the  $H_0$ : Isometric growth.

#### *Growth functions*

In most cases, growth characteristics are assessed by using otolith reading to estimate the age. In fact, bias in age estimation can be caused by accuracy and/or precision issues (Campana, 2001; De Pontual *et al.*, 2006). Hake otoliths are difficult to interpret due to the complexity of the macrostructure and growth variability that has been related to the long spawning season (Vitale *et al.*, 2019) and the age estimation method has not been validated (Piñeiro and Sainza, 2003; De Pontual *et al.*, 2006). For above-mentioned reasons, we used the length frequency analysis (LFA) to obtain the growth parameters. For this analysis, Pauly's most popular technique of ELEFAN I was implemented by using of TropFishR package (Mildenberger *et al.*, 2017) through R software program (R Development Core Team, 2018). With this package one can do some arrangement for choosing an appropriate bin width to maximise the Rn score (Taylor and Mildenberger, 2017). The TropFishR package also provides two

novel optimization routines for the fitting of VBGF or soVBGF parameters: (i) the 'ELEFAN\_SA' function uses the Simulated Annealing package 'GenSA' and (ii) the 'ELEFAN\_GA' function uses the Genetic Algorithm package 'GA' (Scrucca, 2013):

$$L_t = L_{\text{inf}} (1 - \exp(-(L_t - L_{\text{inf}}) K(t - t_0) + S(t) - S(t_0))),$$

Where  $S(t) = (CK/2\pi) \sin 2\pi(t - t_s)$   $C$  is a constant indicating the amplitude of the oscillation, typically ranging from 0 to 1, and  $t_s$  is time of Summer point ( $t_s$ ) on the growth sine curve. Indicates a better growth situation at this point compared to the winter point (Taylor and Mildenberger, 2017),  $L_t$  is the fish length (cm) at time  $t$  (years),  $L_{\text{inf}}$  is the asymptotic length (cm),  $k$  is the growth coefficient ( $\text{years}^{-1}$ ), and  $t_0$  (years) is the hypothetical time at which the length is equal to zero. Munro's growth performance index ( $\phi' = \log(k) + 2\log(L_{\infty})$ ) (Pauly and Munro, 1984) were used to test the accuracy of the growth parameters. All individuals were grouped into size class intervals of 1 cm as to obtain monthly length frequency distributions (LFDs).

#### *Spawning period and length at first maturity*

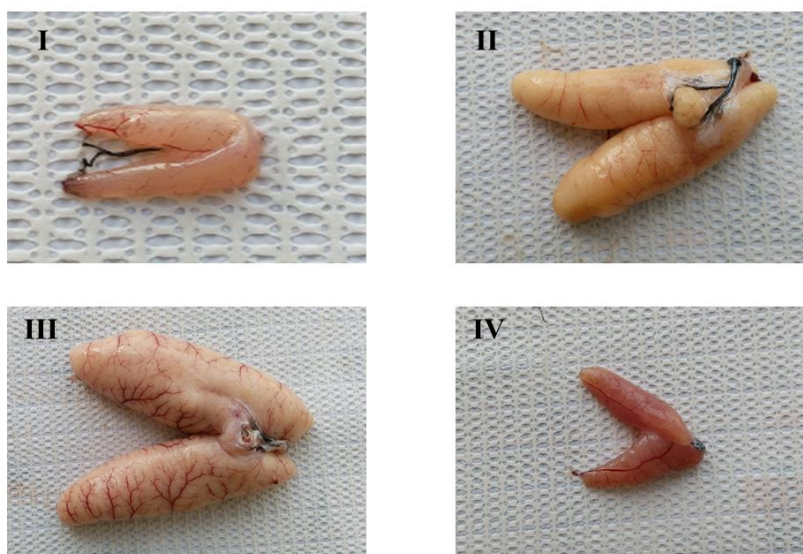
The spawning period of hake was determined with monthly variations of the gonadosomatic index (GSI),  $[\text{Gonad weight (GW)} / (\text{TW} - \text{GW})] \times 100$  (Gibson and Ezzi, 1980) and the condition factor,  $K = [(\text{TW} - \text{GW}) / (\text{TL})^3] \times 100$  (Htun-Han, 1978), were calculated by sex. The size of first maturity ( $L_{50}$ ) was estimated for

both sexes by a logistic function that was fitted to the proportion of sexually mature individuals by each size classes during peak spawning season (between December-February) using a nonlinear regression following formula:

$$P=1/\{1+\exp [-r (L-L_m)]\}$$

Where P is the proportion mature in each size class, r (-b slope) is a parameter controlling the slope of the curvature and

$L_m$  is the length at 50% maturity.  $L_{50}$  was estimated considering individuals in stages higher than stage II (Fig. 1). For this analysis, sizeMat package (Josymar, 2019) was used by R programming. Markov Chain Monte Carlo for logistic regression (Bayes GLM), using a random walk Metropolis algorithm, was applied for calculation method.



**Figure 1: Macroscopic gonadal scale of female hakes at different maturity stages.**

#### *Generalized Additive Modeling (GAM) for spawning activity*

GAMs were applied to examine the relationship between the hake GSI values and some other factors. GAM generalizes multivariate linear regression by relaxing the assumptions of linearity and normality, replacing regression lines with smooths (Ayón *et al.*, 2011). The “mgcv” package in R program was used. Deviance explained, adjusted  $R^2$ , Akaike information criterion (AIC), and GCV (Generalised Cross Validation) were calculated as a measurement of the goodness-of-fit.

Models with the lowest AIC and GCV scores were selected (Wood, 2006). A correlation matrix was deployed to determine the collinearity between variables and which combinations of predictors could be incorporated as independent variables. Because several variables were highly correlated ( $>0.3$  correlation coefficients), only some sub-models with 3 or 4 variables were assessed. Mean sea water temperature values in monthly basis was taken from Meteorological Service of Turkish State (<https://mgm.gov.tr/deniz/deniz-suyusicakligi.aspx>). These are the systems

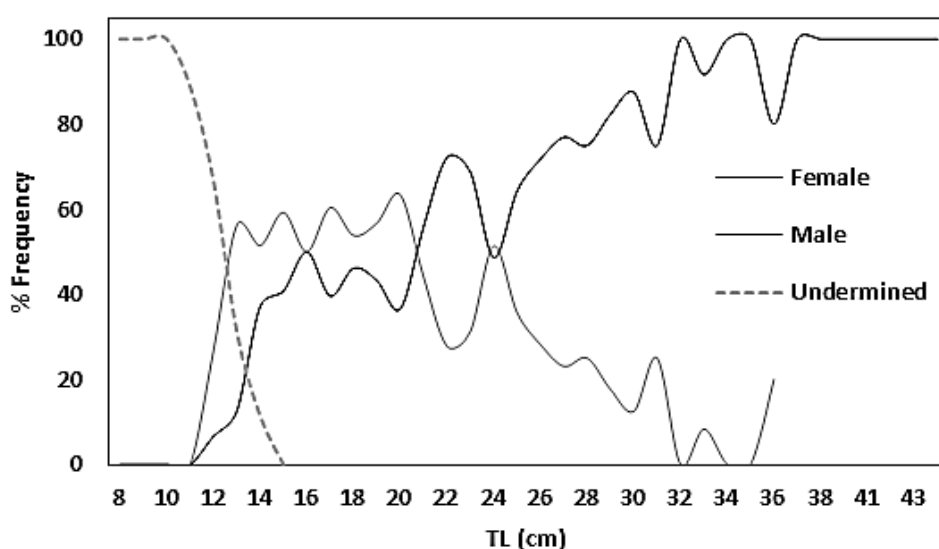
(81 Marine Automatic Meteorology Observation Stations (D-OMGI), 13 of which are sea buoys) used to obtain meteorological information in the Turkish seas in order to support maritime activities and to prepare meteorological products and services for the maritime sector.

## Results

### *Sex ratio and length frequency*

Six hundred and ninety eight specimens were collected from February 2016 to January 2017 in the Sea of Marmara. The length of the European hake ranged

from 8.1 to 44.9 cm with the mean of  $21.9 \pm 2.47$  cm. Length and weight distributions showed significantly differences regarding by sexes. The male: female ratio of the population of the European Hake was 1.00:1.43 which is significantly different from the expected ratio of 1:1 ( $p < 0.05$ ). Male individuals were predominant in small size groups (Fig. 2). While the M:F ratio of the 24 cm length group and smaller individuals is 1: 1.09, this ratio in the 25 cm length group and larger individuals was found to be 1.00: 0.53.



**Figure 2: The total length distribution by sexes.**

### *Length-weight relationship*

The LWR relationships was observed to be highly significant ( $P < 0.001$ ). The ANCOVA test indicated that there was significant difference between females and males ( $p < 0.05$ ) and  $R^2$  values ranged between 0.94 and 0.99 (Table 1). The

total LWR indicates an allometric growth. Positive allometric growth was calculated for females and juveniles whereas males showed isometric growth.

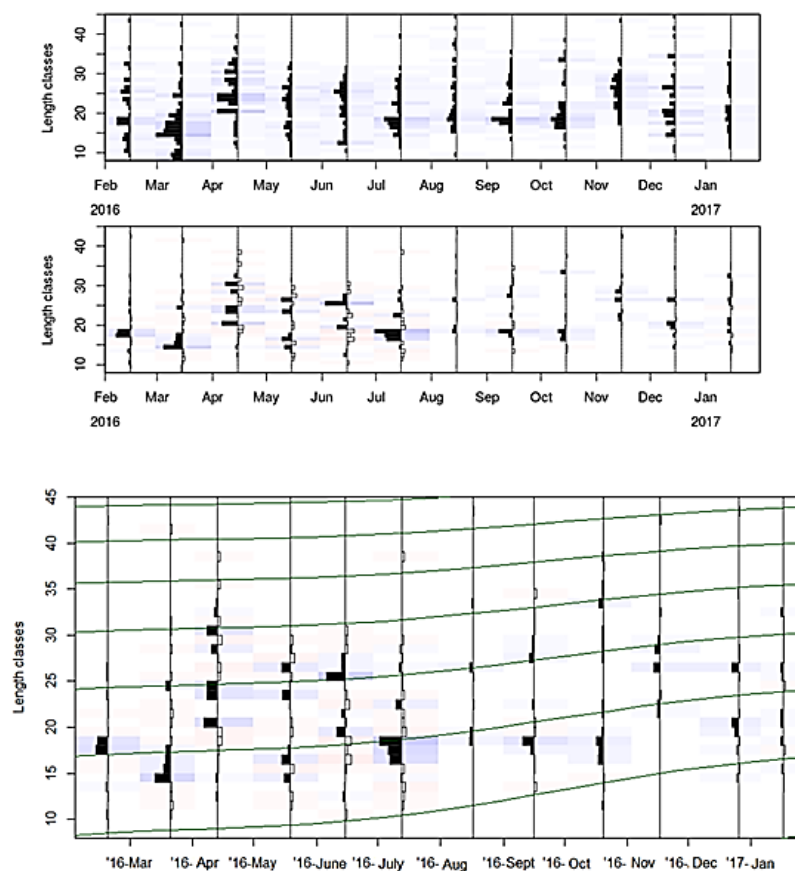
**Table 1: The length-weight relationship parameters by sexes.**

Sample	N	a	b	95 % CI b	R <sup>2</sup>	Growth model	p
Total	698	0.0049	3.14	3.12-3.16	0.99	+Allometric	<0.05
Female	381	0.0058	3.09	3.06-3.13	0.99	+Allometric	<0.05
Male	266	0.007	3.01	2.96-3.06	0.98	Isometric	>0.05
Unidentified	51	0.0026	3.38	3.14-3.63	0.94	+Allometric	<0.05

*Growth parameters*

The frequency distributions of monthly length and the growth curves, fitted by ELEFAN, were presented in Figure 3. The growth parameters generated from different methods are given in Table 2. The maximum Rn score was obtained

from Genetic Algorithm (ELEFAN\_GA). The intensity of the seasonality from two algorithms were very close to each other and assumed a quite remarkable seasonality of the growth rate (C= 0.682 and 0.744).



**Figure 3: Length frequency data visualized in terms of catches (A) and restructured data (B) with a moving average setting of MA=11 and Graphical fit of estimated growth curves produced through optimizations from ELEFAN\_GA plotted through the restructured length-frequency data.**

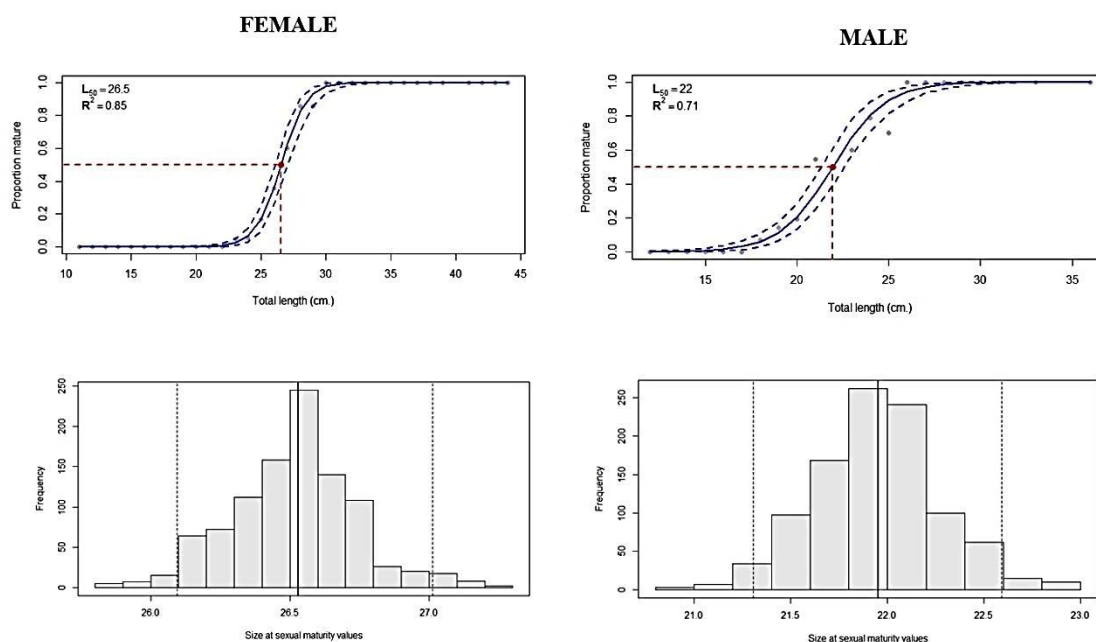
**Table 2: von Bertalanffy growth parameters obtained by different methods.**

	Powell-Wetherall	K_Scan	RSA	ELEFAN_SA	ELEFAN_GA
$L_{inf}$	59	58.6	57	60.9	65.9
K	-	0.1	0.1	0.21	0.16
$t_{anchor}$	-	0.85	0.70	0.30	0.45
C	-	-	-	0.744	0.682
Ts	-	-	-	0.121	0.759
$\emptyset$	-	2.54	2.51	2.90	2.84
Rn Score	-	0.212	0.217	0.223	0.236

### Length at first maturity

The  $L_{50}$  of European hake was determined 26.5 and 22.0 cm for females and males, respectively. The range of  $L_{50}$  was calculated between 26.1-27.0 cm for

females and 21.3-22.6 (Confidence intervals at (95%)) for males according to the Bayesian regression analysis (Fig. 4).



**Figure 4: The length at first maturity and ranges for females and males.**

### Timing of reproduction

Boxplot of GSI by maturity stage (Fig. 5) revealed a gradual increase from the immature stage ( $0.73 \pm 0.03$ ) to the developing ( $4.06 \pm 0.29$ ) and spawning stages ( $7.16 \pm 0.54$ ). Later, the GSI decreased in the post-spawning stage ( $1.36 \pm 0.20$ ). The GSI shows a clear

seasonal trend. From Figure 6, it can be perceived that spawning occurs throughout the year except May, June, and July. Mature individuals were observed throughout the year with the highest occurrence between December and February. The lowest conditions were observed in May and June.



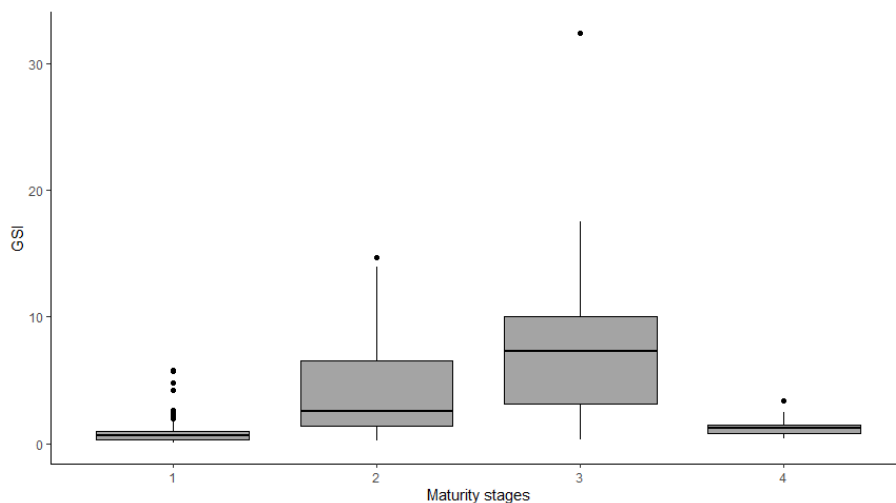


Figure 5: The boxplot of mean gonadosomatic index (GSI) by maturity stage.

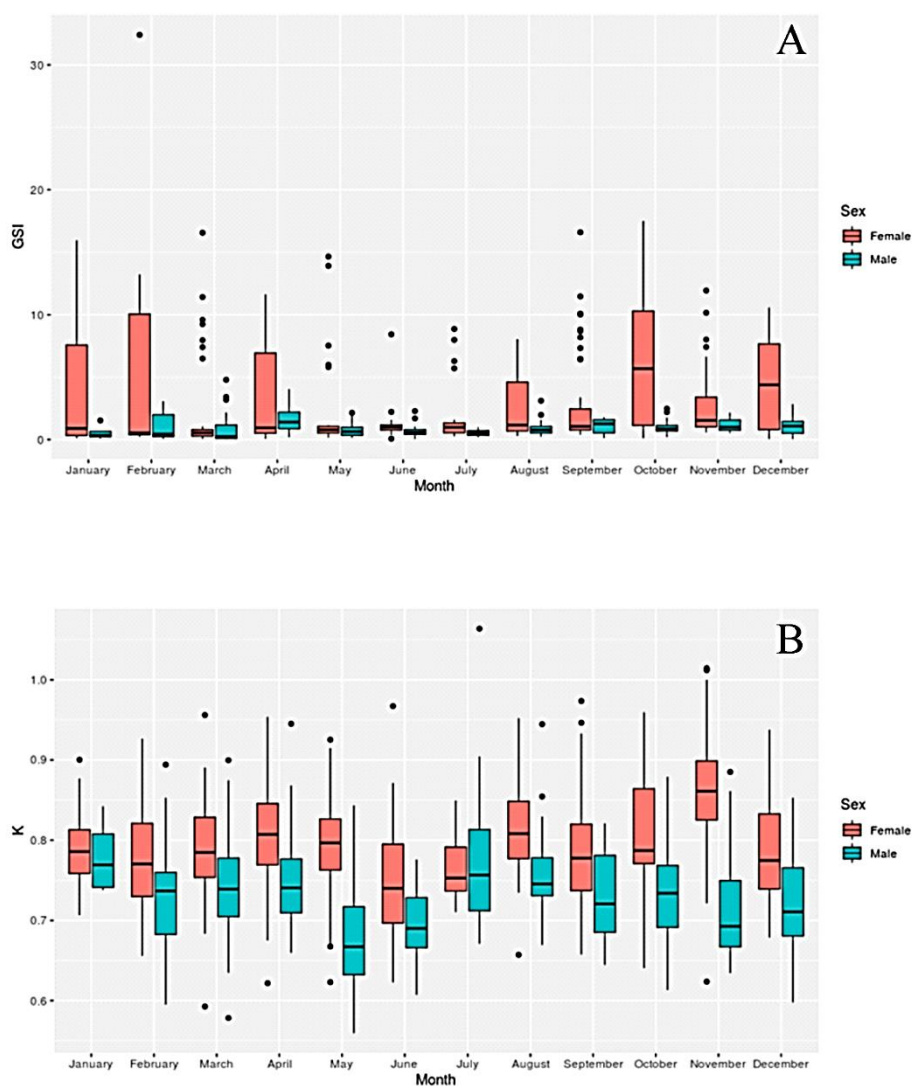
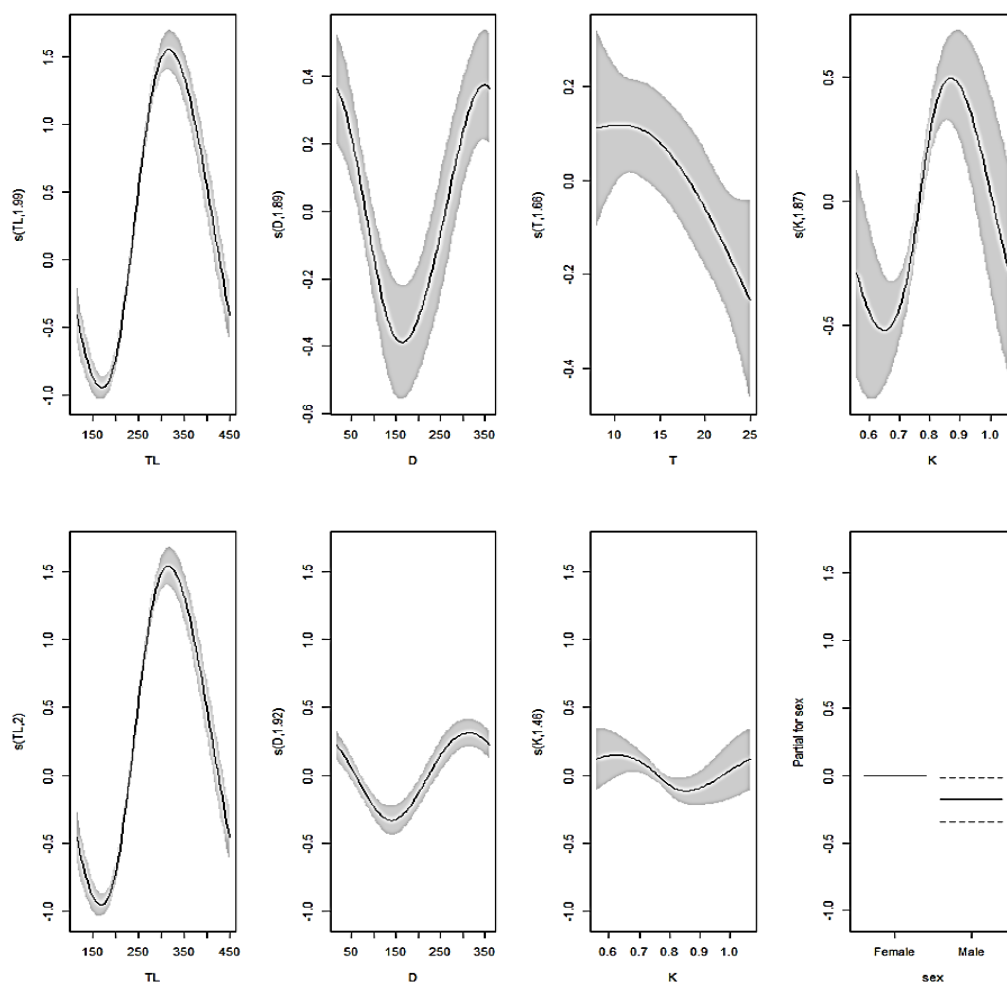


Figure 6: Monthly changes of gonadosomatic index (A) and condition factor (B).

The total length effect was the most important predictor explaining the GSI of the hake, with 53.9 of the deviance explained (Model 01, Table 3). The other single predictors, condition factor (Model 04), day of the year (Model 02), and water temperature (Model 03) explained 7.85, 4.7, and 1.3 of the deviance, respectively. The spline plot

of GSI showing the effect of total length indicated that individuals having the highest GSI values around 30-35 cm in length. Then, it decreased sharply with increasing lengths. The GAM results suggest that the highest GSI values associated with the water temperature lower than 10°C (Fig. 7).



**Figure 7:** Coefficients of the GAM for European hake against additive terms of (TL, mm) total length, (D) day of the year, T (Average sea water temperature), and K (condition factor) used as single predictor variables (upper board) and additive terms of (TL, mm) total length, (D) day of the year, K (condition factor), and sex used in Model 10. Black lines indicate the GAM coefficient values, and the shadowed regions indicate the 95% confidence interval at  $p < 0.05$  (lower board).

The correlations among predictor variables revealed high positive correlations ( $>0.3$  correlation coefficients). Hence, the models with

more than one variable were evaluated by avoiding the correlation between predictors. Model 10 best explained the GSI, including the effect of total length,

day of the year, K and sex (Table 3). The overall performance of the model was adequate, with a  $R^2 = 0.40$  and the resulting model explained a 57.1% of the total variance. The effect of all factors was highly significant ( $p < 0.01$ ).

According to Model 10, GSI exhibited the maximum effect, with one peaks at approximately 30 cm in TL and end of the year (Fig. 7). Females had higher GSI values than the males.

**Table 3: Analysis of deviance explained (DE), GCV, AIC, and  $R^2$  for GAM covariates and their interactions for the best GAM fitted by adding the covariates stepwise.  $p < 0.001$ : \*\*\***

Model	Models	DE (%)	GCV	AIC	$R^2$
M01	s(TL)***	53.9	0.748	1710.74	0.390
M02	s(Days)***	4.7	1.546	2255.03	0.024
M03	s(Temperature)*	1.3	1.598	2281.16	0.006
M04	s(K)***	7.85	1.493	2227.73	0.043
M05	s(TL)***+ s(Temperature)·	53.3	0.760	1721.86	0.382
M06	s(TL)***+ s(Days)***·	56.4	0.711	1673.72	0.396
M07	s(T)*+ s(K)***·	9.24	1.477	2218.85	0.045
M08	s(D)***+ s(K)***·	11.3	1.446	2202.02	0.060
M09	s(TL)***+ s(Days)***+ s(K)*	56.7	0.708	1670.76	0.384
M10	s(TL)***+ s(Days)***+ s(K)*+sex*	57.1	0.705	1666.73	0.403

## Discussion

In this study, consisting of five main subjects, the length distribution, length-weight relationship, growth, spawning period, and length at first maturity of European hake have been addressed in the SEM. The European hake spawning period was predicted by GAM modeling with incorporated to some biotic and abiotic factors. In addition, length at first maturity was modeled Bayesian approach.

The length distribution of the catch in the SEM shows a large proportion of juvenile individuals in the frequency composition. 49.4% of the total individuals were under the minimum landing size limit (20 cm). According to Demirel *et al.* (2017), the largest individual reported to date in the SEM was 75 cm at the beginning of 1990 (Jica, 1993). For period between 1991 and 1994, the average length of hake was

reported 20-24 cm in the SEM (Gözenç *et al.*, 1997). From the recent available literature, Kahraman *et al.* (2017a) recorded a length range 10.4-55.3 cm ( $25.9 \pm 0.21$  cm) for 2014-2015 period, Gül *et al.* (2019a) reported a length range 8.0-65.0 cm for 2009-2011 period, Gül *et al.* (2019b) also reported 16.2-46.0 cm ( $26.11 \pm 0.39$  cm) for 2016, and Yıldız (2020) recorded a length range 10.0-58.8 cm for 2014-2017 period. For remembering, the sampling procedures of these studies are different that some are the fishery dependent while the others are independent studies. As indicted by Gül *et al.* (2019a), the median value of the total lengths of the hake obtained in the 90s was greater than the values obtained at the end of the 2000s. However, the decline in mean length seems not big enough to believe a shift towards to small length classes.

Unfortunately, there is no available literature in the SEM before the 90s.

The common finding of the available literature in consistency with the present study is that sex ratio is skewed towards females in the largest length classes. The sex ratio observed in this study was close to 1 : 1 up to 25 cm. From 25.0 cm TL onwards, the relative percentages of females gradually increased to reach 100% in fish larger than 40.0 cm. A similar trend has been reported from the other parts of the Mediterranean Sea (Uçkun *et al.*, 2000; Colloca *et al.*, 2003; Ligas *et al.*, 2011). Early maturation of males than females at first maturity stage could be the main factor of male dominance until a certain lengths. Indeed, different explanations have been claimed by some hake researchers: (i) differences in the growth rates of two sexes (Recasens *et al.*, 1998; Lucio *et al.*, 2000; Ligas *et al.*, 2011), (ii) higher natural mortality rate of older males than that of females (Piñeiro, 2011), and (iii) different behavior and consequently different accessibility to the fishing gear (Piñeiro and Sainza, 2003).

In general, the parameters of length–weight relationships (LWRs) formulated in this study are close to those from the other studies. Apparently, hake has a high degree of positive allometry when juvenile sizes then its LWR shift to around isometry. Hence, it can be said that hake grows faster in weight than in length in juvenile stage. The LWR parameters are quite important when one estimate the stock biomass from length data. Consequently, it is needed to justify the sex-specific parameters of

LWR into the stock assessment studies. But it should also not be forgotten that, different numbers of studied samples at length distribution margins, especially in larger sizes, can explain the small differences with values reported in the other studies (Piñeiro and Sainza, 2003).

Although many studies have been published on the age and growth, there is still no consensus by the hake researchers. Hake otoliths have been used to determine the age and growth for a long time period starting from 1933 (Hickling, 1933). However, age estimation of hake still presented problems for older ages (>5), which was a limiting factor for assessments (Vitale *et al.*, 2019). The other debate about whether hake is a fast (Bagenal, 1954) or a slow-growing (Hickling, 1933; Meriel-Busy, 1996; Guichet *et al.*, 1973) species has been going on since the 1930s (De Pontual *et al.*, 2006) and growth rate of the hake is still uncertain (Ligas *et al.*, 2011; Vitale *et al.*, 2019). In addition to otolith studies, LFA method has been applied successfully on hake (Bagenal, 1954; Aldebert and Morales-Nin, 1992; Gücü and Bingel, 2011). Therefore, this study is the first attempt to analyze the hake growth in the SEM with LFA method. Inherently, our growth parameters (Linf and K) are in consistency with other fast-growth from Mediterranean and SEM research. The K value (0.16) proofed to the fast growth assumption was suggested by the von Bertalanffy growth function fitted to data. This fast growth function clearly shows seasonality a high oscillating pattern (C=0.682). The onset of the

positive phase of the growth oscillations was estimated as 0.75 (around early October) supported by a high female condition indicates that the growth starts accelerate after the warmer period (when mean temperature=23.4°C). In summer, hydrographical conditions become unfavorable due to the summer warming, hake are forced to abandon the feeding grounds and, therefore, growth rate slows (Gücü and Bingel, 2011). Concurrently, in the SEM the lowest condition factor was calculated in May, June, and July.

According to the extensive available information, hake is a multiple batch spawner with indeterminate fecundity (Perez and Pereiro, 1985; Murua *et al.*, 1998) with a year-round spawning activity characterized by multiple peaks (Recasens *et al.*, 1998; Carbonara *et al.*, 2020). In their study, Kahraman *et al.* (2017b) has indicated that European hake are featured by asynchronous oocyte development in the SEM similar to other stocks (Murua *et al.*, 1998), supporting a protracted spawning period. In this study, we found condition, total length, sea water temperature, and season effect the period and the length of the spawning period of hake. Just recently, Carbonara *et al.* (2020) found that the energy invested in reproduction is derived from energy that is stored during the summer and autumn. Similar to this finding but with one difference, we found that hake in the SEM stores energy during autumn. Although hake has mature or maturing gonads throughout the year, has highest GSI around 10°C of the mean sea water

temperature during winter season, sea water temperature has an effect as a single predictor. Similarly, Murua *et al.* (1998) and Alheit and Pincher (1995) found that hake breeds when water temperature reaches 10°C or 12°C.

Values of length at first maturity for females and males are comparable with previous study performed in the SEM by Kahraman *et al.* (2017b) where empirical formulas used for the assessment. As a general manner, length at first maturity for females and males seems lower than those of the SEM. For the management issue, the current minimum landing size for the hake is implemented as 20 cm (TL) in Turkish territorial waters. However, between 2012 and 2016 it was applied as 25 cm in Turkish waters (Bsgm, 2016). For the sustainable hake fishery management, it should be at least 28 cm as it was in previous management period. The findings of these papers have contributed significantly to a better understanding of the growth and reproductive biology of the hake in the SEM. For further studies, it is obviously needed that determination of spawning areas, stock reproduction potential on the basis of spawning stock biomass, and recruitment success.

### Acknowledgements

This study was funded by Scientific Research Projects Coordination Unit of Istanbul University, project number: 21283. The authors declare that there are no conflicts of interest.

## References

- Aldebert, Y. and Morales-Nin, B., 1992.** La croissance des juvéniles de merlu dans le golfe du Lion: nouvelles méthodes d'approche. *Rapport Commission Internationale pour l'exploration scientifique de la Mer Méditerranée*, 33, 281 P. (In French.)
- Alegria Hernandez, V., Granic, B. and Jukic, S., 1982.** The protection of the hake (*Merluccius merluccius* L.) in the Adriatic Sea by regulation of the level of exploitation, *Acta Adriatica*, 23 (1-2), 431-440.
- Alheit, J. and Pitcher, T.J., 1995.** *Hake: Biology, Fisheries and Markets*, Fish and Fisheries Series No. 15, Chapman & Hall, London.
- Ayón, P., Swartzman, G., Espinoza, P. and Bertrand, A., 2011.** Longterm changes in zooplankton size distribution in the Peruvian Humboldt Current System: conditions favouring sardine or anchovy, *Marine Ecology Progress Series*, 422, 211-222. DOI: 10.3354/meps08918
- Bagenal, T.B., 1954.** Growth rate of the hake (*Merluccius merluccius* L.) in the Clyde and other Scottish areas. *Journal of the Marine Biology Association of the United Kingdom*, 33, 69-95.
- Beşiktepe, Ş.T., Sur, H.L., Latif, M.A., Oğuz, T. and Ünlüata, Ü., 1994.** The circulation and hydrography of the Marmara Sea, *Progress in Oceanography*, 34, 285-334.
- Beverton, R.J.H. and Holt, 1959.** A review of the life-spans and mortality rates of fish in nature and their relation to growth and other physiological characteristics. *Colloq.*, 5, 142-180.
- Bsgm, 2016.** *Regulation for Commercial Fisheries in Seas and Inland Waters for 2016–2020 Fishing Period*, number 4/1 (No: 2016/35). Ankara: General Directorate of Fisheries and Aquaculture (BSGM), Republic of Turkey Ministry of Food Agriculture and Livestock. [In Turkish].
- Campana, S., 2001.** Accuracy, precision and quality control in age determination, including a review of the use and abuse of age validation methods. *Journal of Fish Biology*, 59 (2), 197-242. <https://doi.org/10.1111/j.1095-8649.2001.tb00127.x>
- Carbonara, P., Porcu, C., Donnalioia, M., Pesci, P., Sion, L., Spedicato, M.T., Zupa, W., Vitale, F. and Follesa, M.C., 2020.** The spawning strategy of European hake (*Merluccius merluccius*, L. 1758) across the Western and Central Mediterranean Sea. *Fisheries Research*, <https://doi.org/10.1016/j.fishres.2019.105333>
- Casey, J. and Pereiro, J., 1995.** European hake (*M. merluccius*) in the North-east Atlantic. *Fish and Fisheries Series*, 15, pp. 125-147. In *Hake: Fisheries, Ecology and Markets*. J. Alheit, T.J. Pitcher, (Eds.) Chapman and Hall, London.
- Colloca, F., Gentiloni, P., Belluscio, A., Carpentieri, P. and Ardizzone, G.D., 2003.** Analysis and validation

- of annual increments in otoliths of European hake (*Merluccius merluccius*) in the central Mediterranean Sea, *Archive of Fishery and Marine Research*, 50, 175-192.
- De Pontual, H., Groison, A.L., Piñeiro, C. and Bertignac, M., 2006.** Evidence of underestimation of European hake growth in the Bay of Biscay, and its relationship with bias in the agreed method of age estimation, *ICES Journal of Marine Science*, 63, 1674-1681. DOI: 10.1016/j.icesjms.2006.07.007
- Demirel, N., Gül, G., Dalkara, E.M. and Yükses, A., 2017.** Ecosystem approach to sustainability level of European hake stock in the Marmara Sea. The Scientific and Technological Research Council of Turkey, Final Report, 04/2017.
- Deniz, T., Gökürk, D. and Ateş, C., 2020.** Selectivity parameters of European hake gillnets for target and by-catch species with a perspective on small-scale fisheries management in the Sea of Marmara, Turkey. *Regional Studies in Marine Science*, 33. DOI: 10.1016/j.rsma.2019.100934.
- Domínguez-Petit, R., 2007.** Study of reproductive potential of *Merluccius merluccius* in the Galician shelf, Doctoral Thesis. University of Vigo, Spain, 253 P.
- Froese, R. and Pauly, D., 2019.** FishBase, World Wide Web electronic publication, www.fishbase.org, (08/2020).
- García-Rodríguez, M. and Esteban, A., 1995.** Algunos aspectos sobre la biología y pesca de la merluza mediterránea *Merluccius merluccius* (Linnaeus, 1758) en la Bahía de Santa Pola (sureste de la península ibérica). *Boletín del Instituto Español de Oceanografía*, 11(1), 3-25.
- Gibson, R.N and Ezzi, I.A., 1980.** The biology of the scaldfish, *Arnoglossus laterna* (Walbaum) on the west coast of Scotland. *Journal of Fish Biology*, 17, 565-575.
- Göktürk, D., Deniz, T. and Ateş, C., 2016.** A case study on catch characteristics of European hake gillnet fishery in the southern Sea of Marmara. Turkey. *Cahiers de Biologie*, 57(4), 343-354. <http://dx.doi.org/10.21411/CBM.A.2A429CF>.
- Gözenç, S., Kurter, A., Mater, K.A., Bilecik, N., Adatepe, F.M., Uysal, A., Orhon, S., Kiratli, N., Gümüş, E., Demirel, S., Yükses, A., Orhon, V., Çimen, N., Yildirim, V., Dilek, M., Kamil, Y. and Harun, K., 1997.** Marmara Denizi'nde ekonomik demersal balıkların stok tayini. The Scientific and Technological Research Council of Turkey (TUBITAK-DEBAG), Final Report, Project No: 13/g.
- Guichet, R., Quero, J.C. and Labastie, J., 1973.** Estimation de la composition du stock du merlu au nord et à l'ouest de l'Irlande. ICES Document CM, G: 5.
- Gücü, A.C. and Bingel, F., 2011.** Hake, *Merluccius merluccius* L., in the northeastern Mediterranean Sea: a

- case of disappearance, *Journal of Applied Ichthyology*, 27, 1001-1012. DOI: 10.1111/j.1439-0426.2011.01765.x
- Gül, G., Yüksek, A., Murat-Dalkara, E. and Demirel, N., 2019a.** Length-Frequency Distribution of European Hake, *Merluccius merluccius* from 1995 to 2016 in The Sea of Marmara. *COMU Journal of Marine Science and Fisheries*, 2(2), 167-172.
- Gül, G., Murat-Dalkara, E., Yüksek, A. and Demirel, N., 2019b.** Age and Growth of European Hake, *Merluccius merluccius* in The Sea of Marmara. *COMU Journal of Marine Science and Fisheries*, 2 (2), 147-154.
- Hickling, C.F., 1933.** The natural history of the hake. Part 3. Seasonal changes in the condition of hake. U.K. *Fishery Investment Series* II,12(1), 120 P.
- Htun-Han, M., 1978.** Reproductive biology of the Dab Limanda limanda (L) in the North Sea: gonadosomatic index, hepatic somatic index and condition factor. *Fish Biology*, 13, 351-377.
- Jica, 1993.** Report of demersal fisheries resource survey in the Republic of Turkey. Japan International Cooperation Agency.
- Josymar, T.M., 2019.** sizeMat: Estimate Size at Sexual Maturity, R package version 1.0., <https://CRAN.R-project.org/package=sizeMat>
- Kahraman, A.E., Yildiz, T., Uzer, U. and Karakulak, F.S., 2017a.** Age composition, growth and mortality of European hake *Merluccius merluccius* (Linnaeus, 1758) (Actinopterygii: Merlucciidae) from the Sea of Marmara, Turkey, *Acta Zoologica Bulgarica*, 69(3), 377-384.
- Kahraman, A.E., Yildiz, T., Uzer, U. and Karakulak, F.S., 2017b.** Sexual maturity and reproductive patterns of European hake *Merluccius merluccius* (Linnaeus, 1758) (Actinopterygii: Merlucciidae) from the Sea of Marmara, Turkey. *Acta Zoologica Bulgarica*, 69, 385-392.
- Le Cren, E.D., 1951.** The length-weight relationship and seasonal cycle in gonad weight and condition in the Perch (*Perca fluviatilis*). *Journal of Animal Ecology*, 20, 201-219.
- Ligas, A., Pierattini, C., Viva, C., Bertolini, C. and Belcari, P., 2011.** Age estimation and growth of European hake *Merluccius merluccius* (Linnaeus, 1758), in the Northern Thyrrenian Sea. *Atti Della Società Toscana di Scienze Naturali Serie B*, 118, 9-14. DOI: 10.2424/ASTSN.M.2011.16
- Lucio, P., Murua, H. and Santurtun, M., 2000.** Growth and reproduction of hake (*Merluccius merluccius*) in the Bay of Biscay during the period 1996–1997, *Ozeanografika*, 3, 325-354.
- Maravelias, C.D., Tsitsika, E.V. and Papakonstantinou, C., 2007.** Environmental influences on the spatial distribution of European hake *Merluccius merluccius* and red mullet *Mullus barbatus* in the Mediterranean. *Ecological Research*, 22, 678-685. DOI: 10.1007/s11284-006-0309-0



- Martin, P., Sartor, P. and García-Rodríguez, M., 2002.** Exploitation patterns of the European hake *Merluccius merluccius*, red mullet *Mullus barbatus* and striped red mullet *Mullus surmuletus* in the western Mediterranean. *Journal of Applied Ichthyology*, 15(1), 24-28. DOI: 10.1046/j.14390426.1999.00125.x
- Meriel-Busy, M., 1996.** La croissance du merlu dans le Golfe de Gascogne. International Council for the Exploration of the Sea CM, 1966/G: 17.
- Mildenberger, T.K., Taylor, M.H. and Wolff, M., 2017.** TropFishR: an R package for fisheries analysis with length-frequency data. *Methods in Ecology and Evolution*, 8(11), 1520-1527. ISSN 2041-210X, DOI: 10.1111/2041-210X.12791 (URL:<https://doi.org/10.1111/2041-210X.12791>)
- Murua, H., Motos, L. and Lucio, P., 1998.** Reproductive modality and batch fecundity of the European hake (*Merluccius merluccius* L.) in the Bay of Biscay. *California Cooperative Oceanic Fisheries Investigations Report*, 39, 196-203.
- Ogle, D.H., Wheeler, P. and Dinno, A., 2019.** FSA: Fisheries Stock Analysis. R package version 0.8.26.9000. Available at <https://github.com/droglenc/FSA>.
- Orsi-Relini, L., Papaconstantinou, C., Jukic-Peladic, S., Souplet, A., De Sola, L.G., Piccinetti, C., Kavadas, S. and Rossi, M., 2002.** Distribution of the Mediterranean hake populations *Merluccius merluccius smiridus* Rafinesque, 1810 (Osteichthyes: Gadiformes) based on six years monitoring by trawl-surveys: some implications for management. *Scientia Marina*, 66 (Suppl. 2), 21-38.
- Öztürk, B., 2009.** Investigations of the rose shrimp *Parapenaeus longirostris* (Lucas, 1846) in the Northern Marmara Sea. *J. Black Sea/Mediterranean Environment*, 15, 123-134.
- Pauly, D. and Munro, J.L., 1984.** Once more on the comparison of growth in fish and invertebrates. *Fishbyte ICLARM* 2, 21.
- Perez, N. and Pereiro, F.J., 1985.** Aspectos de la reproducción de la merluza, *M. merluccius*, de la plataforma gallega y cantábrica. *Boletín del Instituto Oceanográfico*, 3, 39-47.
- Piñeiro, C. and Sainza, M., 2003.** Age estimation, growth and maturity of the European hake (*Merluccius merluccius*, Linnaeus, 1758) from Iberian Atlantic waters, *ICES Journal of Marine Science*, 60, 1086-1102. [https://doi.org/10.1016/s1054-3139\(03\)00086-9](https://doi.org/10.1016/s1054-3139(03)00086-9)
- Piñeiro, C., 2011.** Edad y Crecimiento de la Merluza Europea *Merluccius merluccius* (Linnaeus, 1758) del Noroeste de la Península Ibérica: Evolución de un Paradigma. Tesis Doctoral, Universidade de Vigo, Vigo.
- R Development Core Team, 2018.** R: A Language and Environment for Statistical Computing. Vienna: R

- Foundation for Statistical Computing. <https://www.R-project.org>.
- Recasens, L., Lombarte, A., Morales-Nin, B. and Torres, G.J., 1998.** Spatiotemporal variation in the population structure of the European hake in the NW Mediterranean. *Journal of Fish Biology*, 53, 387-401.
- Roldán, M.I., García-Marín, J.L., Utter, F.M. and Pla, C., 1998.** Population genetic structure of European hake, *Merluccius merluccius*. *Heredity*, 81, 327-334.
- Scrucca, L., 2013.** GA: A Package for Genetic Algorithms in R. *Journal of Statistical Software*, 53(4), 1-37. URL: <http://www.jstatsoft.org/v53/i04/>.
- Sorokin, Y.I., 1983.** The Black Sea. In: Ecosystem of the World, Estuaries and Enclosed Seas (B.H. Ketchum ed.), Elsevier Science Publishers: Amsterdam, pp. 253-292.
- Taylor, M.H. and Mildenberger, T.K., 2017.** “Extending Electronic Length Frequency Analyses in R.” *Fisheries Management and Ecology*, 24(4), 330-38. DOI:10.1111/fme.12232.
- Uçkun, D., Toğulga, M. and Taşkavak, E., 2000.** A preliminary study on the growth of the common hake (*Merluccius merluccius* L., 1758) in Izmir Bay, Aegean Sea. *Acta Adriatica*, 41(2), 25-34.
- Vitale, F., Worsøe Clausen, L. and Ní Chonchúir, G. (Eds.), 2019.** Handbook of fish age estimation protocols and validation methods. ICES Cooperative Research Report, 2019, No. 346. 180 P. <http://doi.org/10.17895/ices.pub.5221>
- Wood, S.N., 2006.** Generalized Additive Models: An Introduction with R. CRC Press: London, 410 P.
- Yazici, M.F., 2004.** A study on the catch composition and bycatch in the shrimp beam trawl. Master Thesis. Çanakkale 18 Mart University, Turkey, 74 P.
- Yildiz, T., 2020.** Spatiotemporal distribution of European hake *Merluccius merluccius* related to environmental conditions on the continental shelf of the Sea of Marmara. *Cahiers de Biologie Marine*, 61, 195-205. DOI: 10.2144/CBM.A.2D189CC3.
- Zar, J.H., 1999.** Biostatistical Analysis (4th ed.). Prentice-Hall Inc., New Jersey, pp. 662–663.
- Zengin, M. and Akyol, O., 2009.** Description of bycatch species from the coastal shrimp beam trawl fishery in Turkey. *Journal of Applied Ichthyology*, 25(2), 211-214. DOI: 10.1111/j.1439-0426.2009.01218.x
- Zengin, M., Polat, H., Kutlu, S. and Dinçer, A.C., 2004.** A study on the development of deep-water pink shrimp (*Parapenaeus longirostris*, Lucas 1846) fisheries in the Sea of Marmara [Marmara Denizindeki derin su pembe karidesi (*Parapenaeus longirostris*, Lucas 1846) balıkçılığının geliştirilmesi üzerine bir araştırma.]. (TAGEM/HAYSUD/2001/09/02/004 , Final Report, Trabzon Su Ürünleri Merkez Araştırma Enstitüsü, 220 P. [in Turkish]